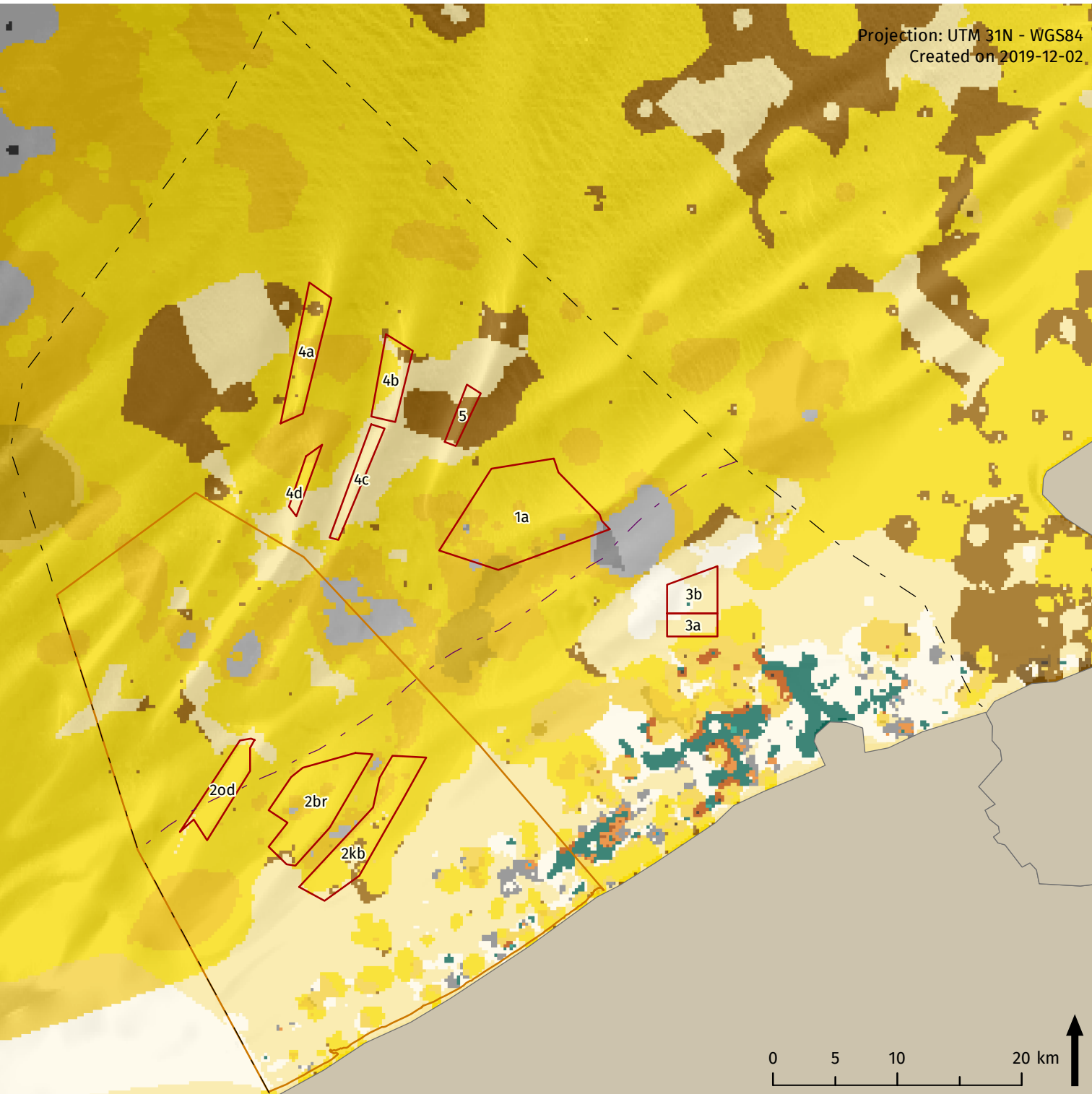


# Sand and gravel extraction: Soil characteristics



Projection: UTM 31N - WGS84  
Created on 2019-12-02



## Legend

- 12 nautical mile line
- Belgian part of North Sea
- Special area for conservation 'Vlaamse Banken'
- Exploitation area

### Seabed habitats

- silt
- sandy silt
- clay
- sandy clay
- sand
- silty sand
- clayely sand
- slightly gravelly sand
- slightly gravelly muddy sand
- gravelly sand
- gravelly muddy sand

- mud
- sandy mud
- slightly gravelly sandy mud
- gravel
- sandy gravel
- muddy sandy gravel
- sand trace gravel
- muddy sand trace gravel
- mud trace gravel
- sandy mud trace gravel

## Sources

Base map: ESRI  
Belgium: NGI  
Maritime boundaries: Vlaamse Hydrografie  
Special area for conservation, exploitation area: Royal Decree of 22 May 2019 establishing the marine spatial plan for the period from 2020 to 2026 in the Belgian sea areas  
Habitats: Van Lancker, V & van Heteren, S, 2013. Case Study 4: Revisiting the spatial distribution of EUNIS Level 3 North Sea habitats in view of Europe's Marine Strategy Framework Directive, pp. 86-93.  
In: Van Lancker, V, & Van Heteren, S (Eds.). Standardisation and harmonisation in seabed habitat mapping: role and added value of geological data and information. Part A: Sediment characterisation. Geo-Seas report 10.5A.