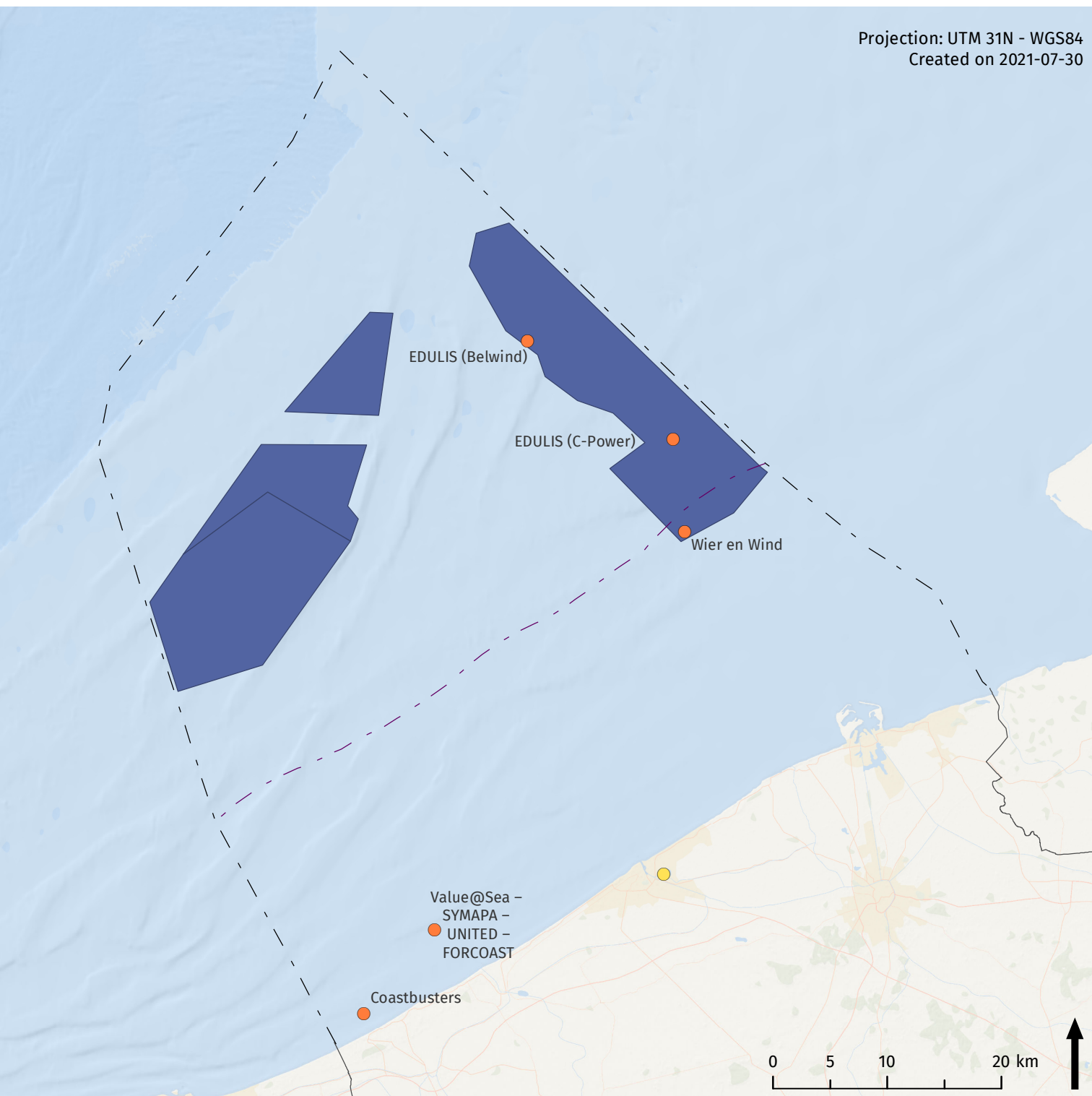


Marine aquaculture



Projection: UTM 31N - WGS84
Created on 2021-07-30



Legend

- - 12 nautical mile line
- - Belgian part of North Sea
- Commercial shellfish culture
- Project location
- Development area for aquaculture

Sources

Base map: ESRI
Belgium: NGI
Maritime boundaries: Vlaamse Hydrografie
Shellfish culture: Coastal Division
Project locations: Coastbusters, EDULIS, Value@Sea, SYMAPA, UNITED, Wier en Wind
Marine spatial planning: Royal Decree of 22 May 2019 establishing the marine spatial plan for the period from 2020 to 2026 in the Belgian sea areas