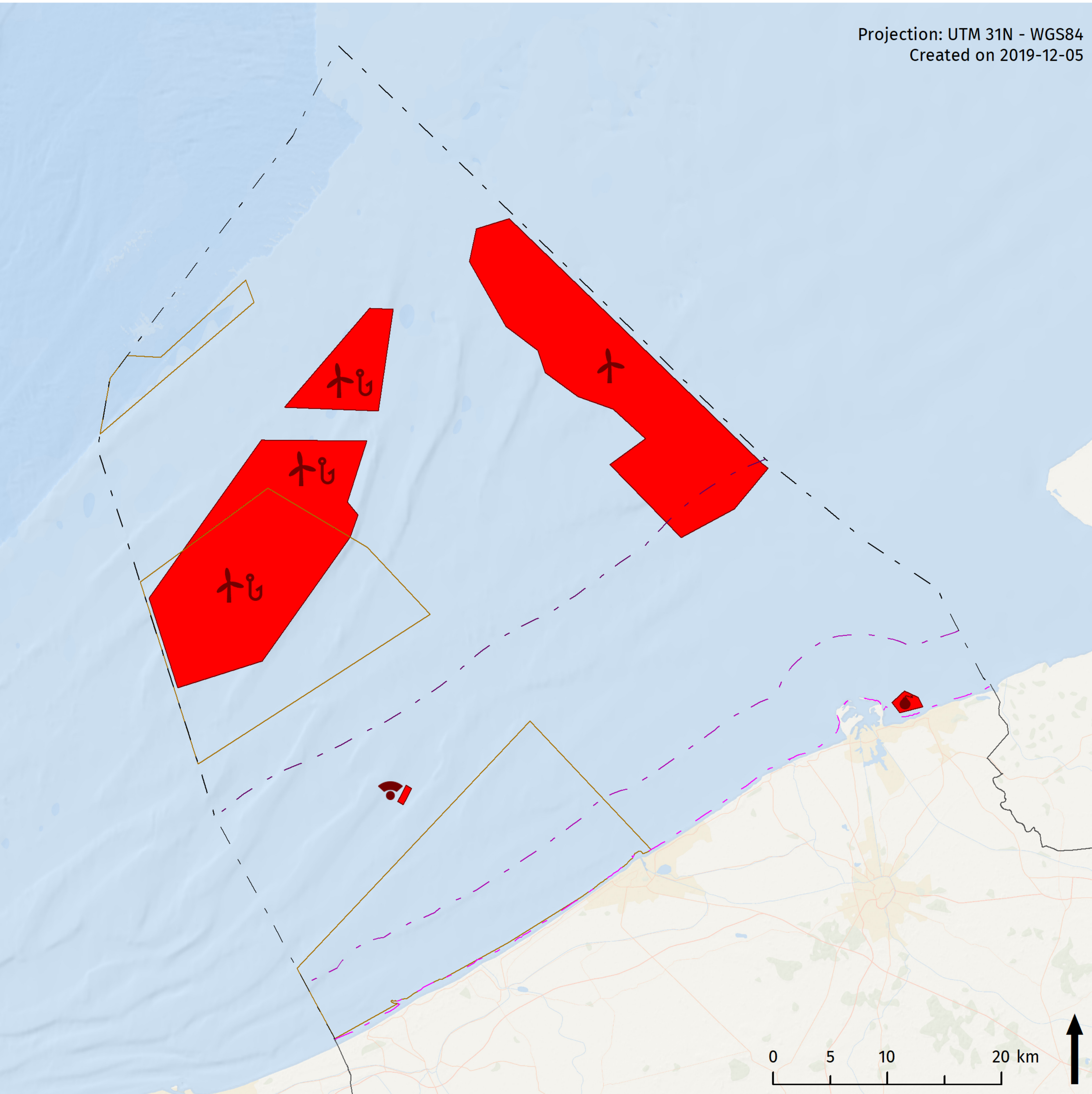


# Commercial sea fisheries



## Legend

- Baseline
- 3 nautical mile line
- 12 nautical mile line
- Belgian part of North Sea
- Research zone sea bottom integrity
- ✚ Area for renewable energy (wind farms)
- ✚ Area for renewable energy (wind farms)\*
- 💣 Ammunition dump site 'Paardenmarkt'\*\*
- 📡 Calibration area acoustic equipment\*\*

## Sources

Base map: ESRI  
Belgium: NGI  
Maritime boundaries: Vlaamse Hydrografie  
Marine spatial planning fisheries: Royal Decree of 22 May 2019 establishing the marine spatial plan for the period from 2020 to 2026 in the Belgian sea areas

*\* The possibilities for passive fishery are being explored.*  
*\*\* No bottom-disturbing operations allowed.*